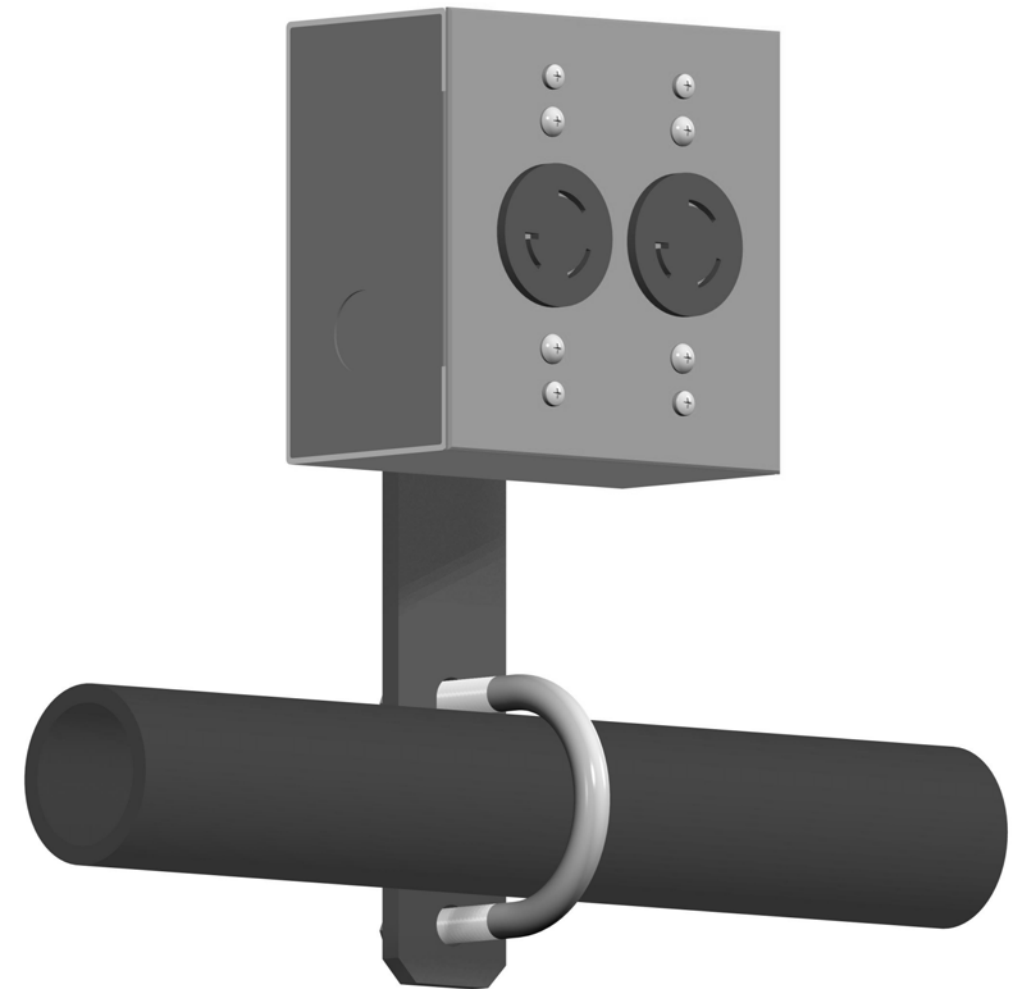
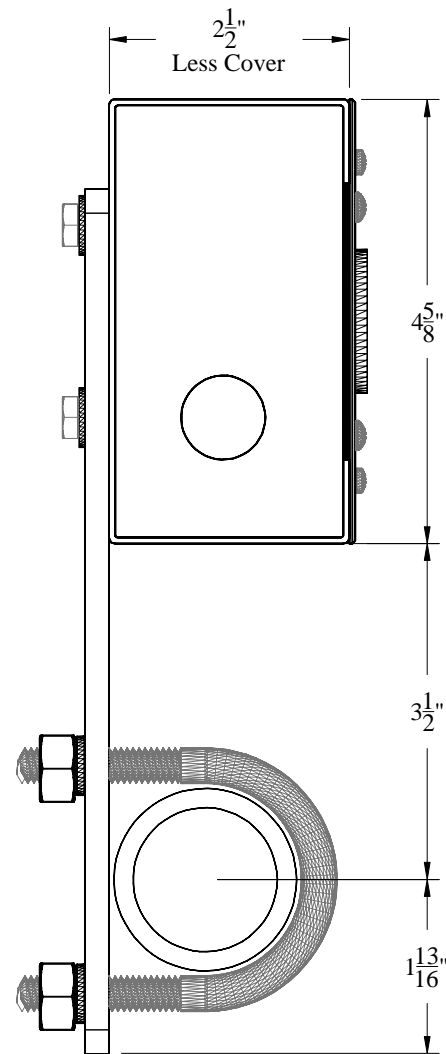
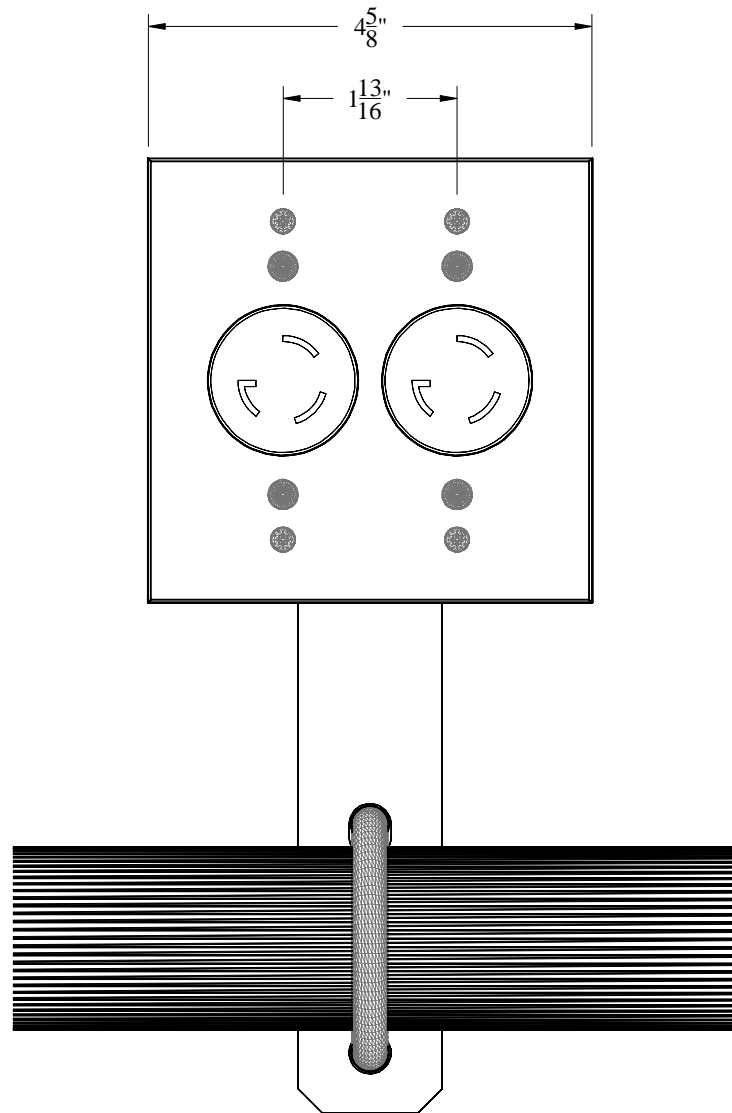


REVISIONS		
REV.	DESCRIPTION	DATE

SPECIFICATIONS:

- * PLUG BOX SHALL BE 4-5/8" W X 4-5/8" H X 2-1/2" DEEP
- * FABRICATED OF 18 GAGE SHEET METAL
- * CONDUIT KNOCK-OUTS ON BOTH SIDES
- * BLACK SEMI-GLOSS POWDER COAT FINISH
- * 1/4-20 THREADED INSERTS ON REAR FOR ATTACHMENT OPTIONS
- * NEMA L520 RECEPTACLES
- * CONTRACTOR WIRES TO CONNECTOR TERMINALS



CONTRACT NO: PB404		Rigging Innovators, Inc. San Antonio, Texas	
CATALOG:			
DRAWN BY: CADD	11/27/2007	TITLE: Plug Box Pipe Mounted (2) NEMA L520 Receptacles	
CHECKED BY:		DESIGNED BY:	
SIZE A3	DATE 11/27/2007	DRAWING NO: PB404-	REV. -
(C) R.I., Inc. 2007		SCALE: Half	SHEET: 1 OF 1