

8

7

6

5

4

3

2

1

SPECIFICATIONS:

- * JUNCTION BOX SHALL BE 24"W X 12"H X 4"D DEEP
- * FABRICATED OF 16 GAUGE CRS STEEL
- * CONDUIT KNOCKOUTS ON ALL FOUR SIDES
- * SPRING CLAMP TERMINALS
- * ANSI 61 GRAY
- * GROUNDING LUG INSTALLED

REVISIONS		
REV.	DESCRIPTION	DATE

D

D

C

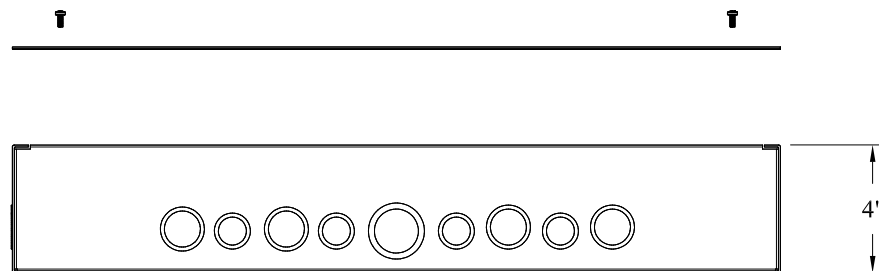
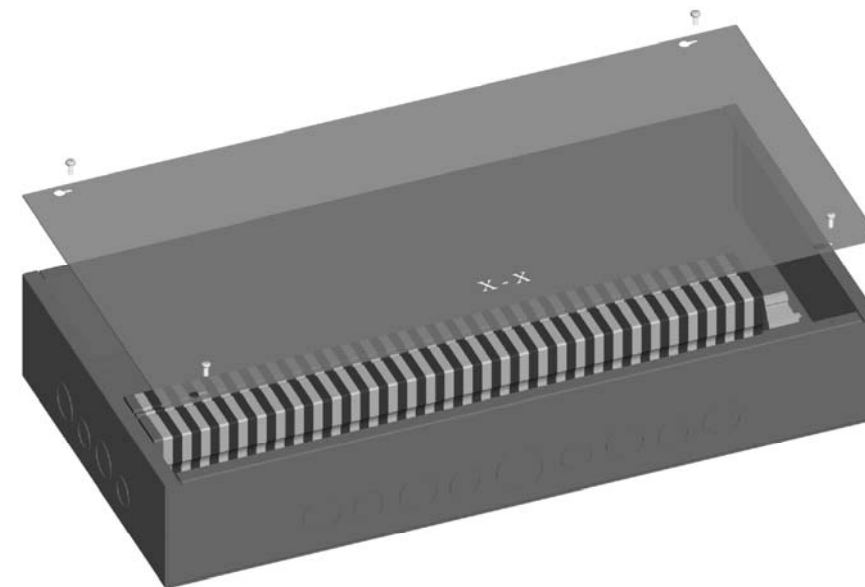
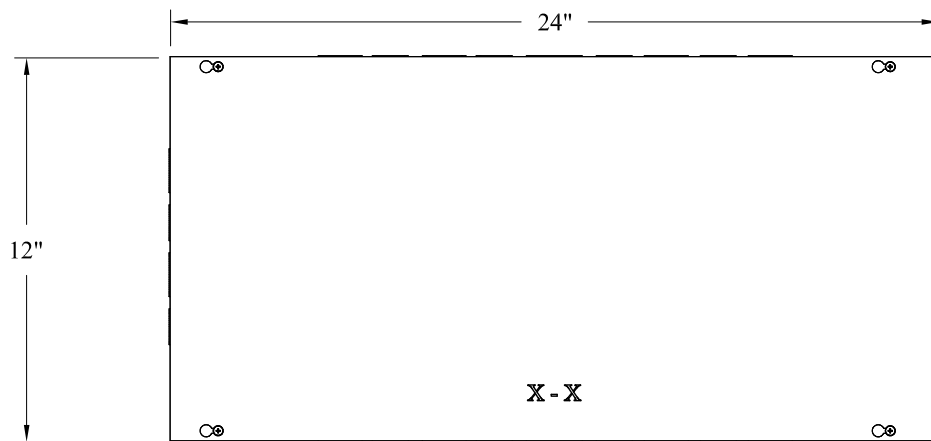
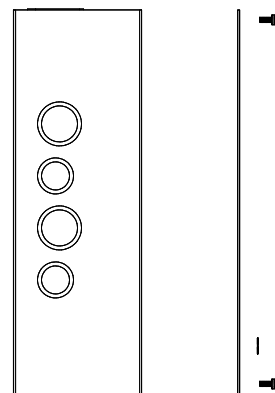
C

B

B

A

A



CONTRACT NO: GIJB-		Rigging Innovators, Inc. San Antonio, Texas		
CATALOG:				
DRAWN BY: CADD	09/25/2008	TITLE: Gridiron Junction Box -		
CHECKED BY:		DRAWING NO: GIJB-12X24		
DESIGNED BY:		SIZE A3	DATE 07/06/2009	REV.
(C) R.I., Inc. 2009		SCALE: 1:4	SHEET: 1 OF 1	

8

7

6

5

4

3

2

1