

8

7

6

5

4

3

2

1

REVISIONS		
REV.	DESCRIPTION	DATE

**SPECIFICATIONS:**

- \* DATA BOX SHALL BE 4-5/8"W X 4-5/8"H X 2-1/2"DEEP
- \* FABRICATED OF 18 GAGE SHEET METAL
- \* CONDUIT KNOCK-OUTS ON BOTH SIDES
- \* BLACK SEMI-GLOSS POWDER COAT FINISH
- \* 1/4-20 THREADED INSERTS ON REAR FOR ATTACHMENT OPTIONS
- \* XLR-5 FEMALE RECEPTACLES
- \* CONTRACTOR WIRES TO CONNECTOR TERMINALS

D

C

B

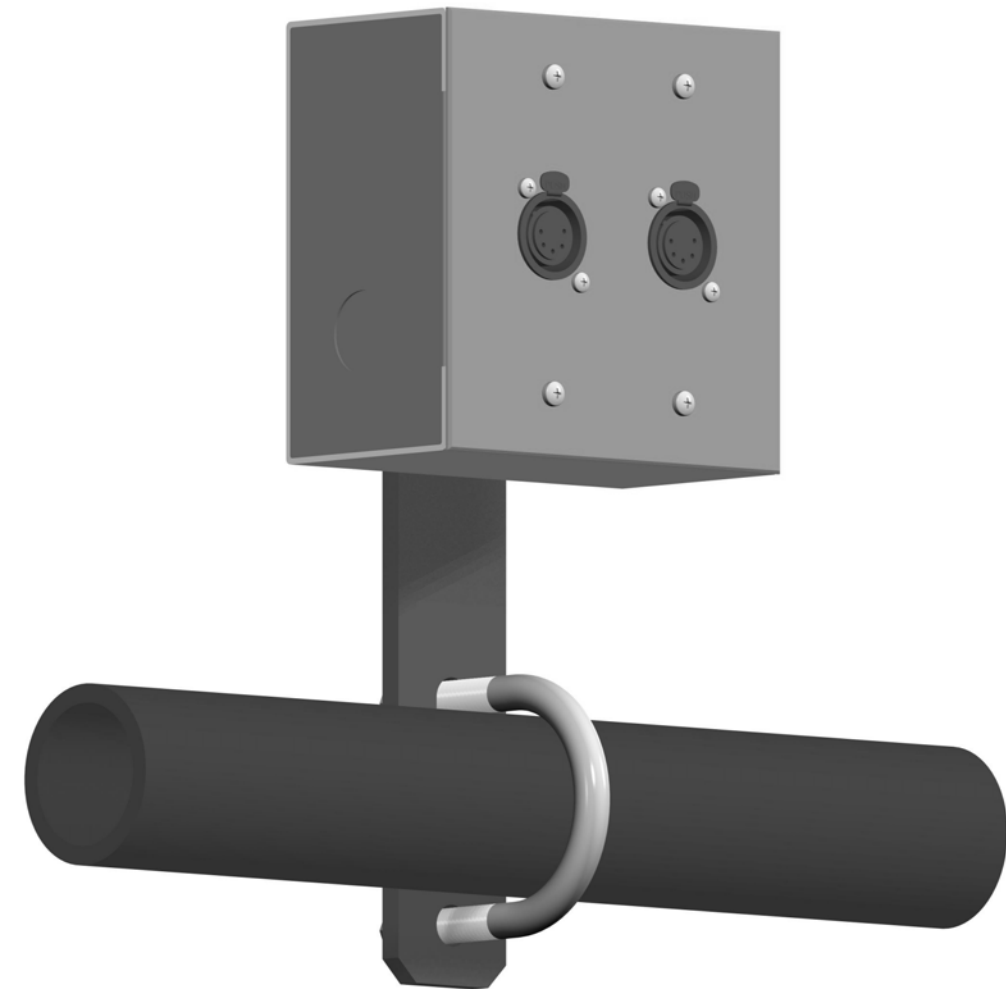
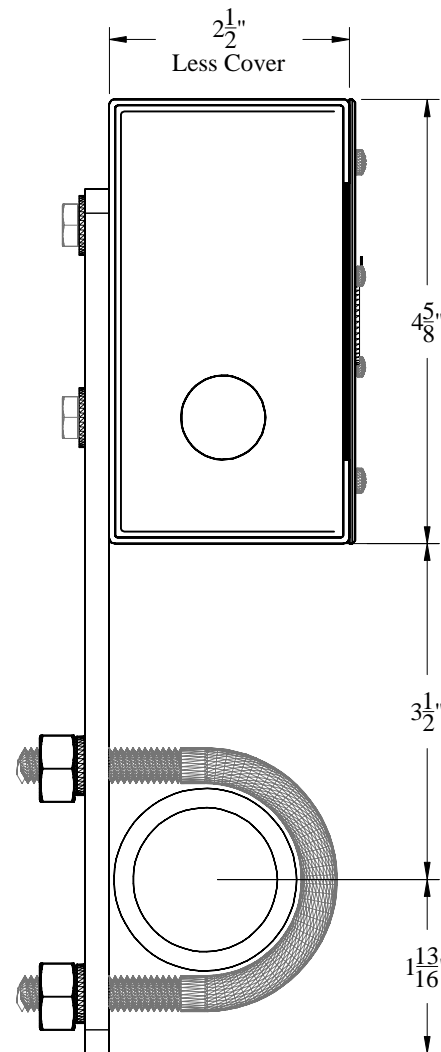
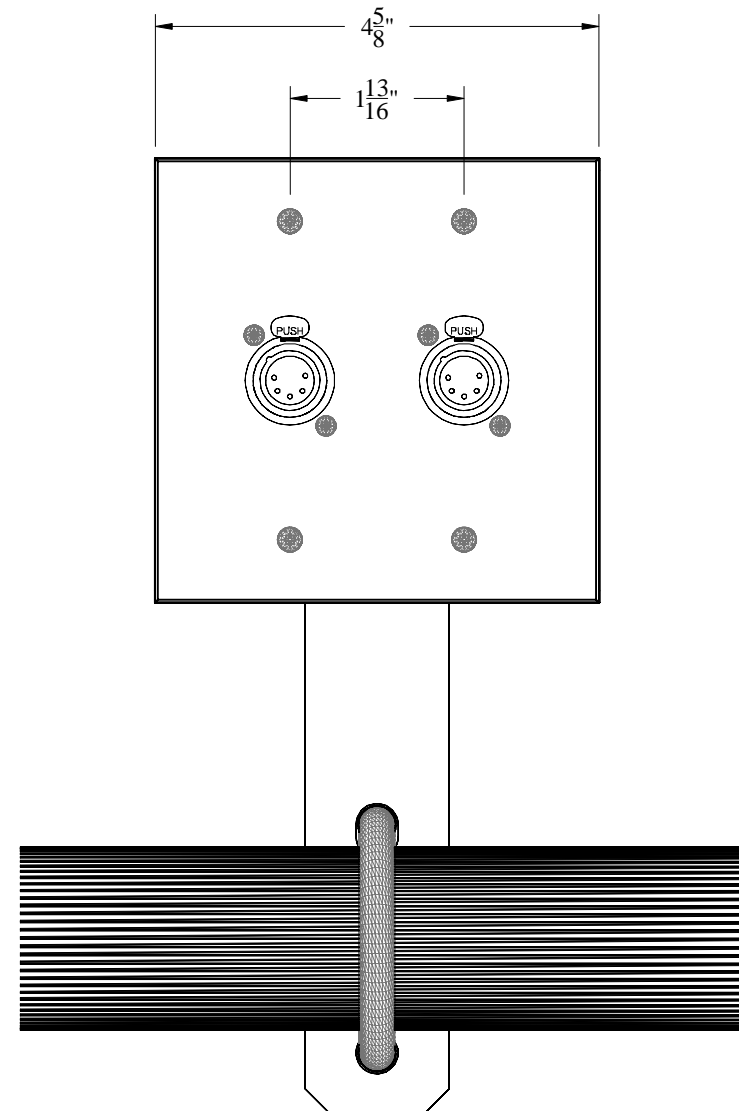
A

D

C

B

A



CONTRACT NO: PB404		<b>Rigging Innovators, Inc.</b> San Antonio, Texas		
CATALOG:				
DRAWN BY: CADD	11/27/2007	TITLE: <b>Data Box Pipe Mounted (2) XLR-5 Female Receptacles</b>		
CHECKED BY:		DESIGNED BY:	SIZE <b>A3</b>	DATE 11/27/2007
		DRAWING NO: <b>PB404-</b>	REV. -	
(C) R.I., Inc. 2007		SCALE: Half	SHEET: 1 OF 1	

8

7

6

5

4

3

2

1