

8

7

6

5

4

3

2

1

REVISIONS		
REV.	DESCRIPTION	DATE

SPECIFICATIONS:

- * DATA BOX SHALL BE 4-5/8"W X 4-5/8"H X 2-1/2"DEEP
- * FABRICATED OF 18 GAGE SHEET METAL
- * CONDUIT KNOCK-OUTS ON BOTH SIDES
- * BLACK SEMI-GLOSS POWDER COAT FINISH
- * 1/4-20 THREADED INSERTS ON REAR FOR ATTACHMENT OPTIONS
- * (1) XLR-5 FEMALE & (1) XLR-5 MALE RECEPTACLE
- * CONTRACTOR WIRES TO CONNECTOR TERMINALS

D

C

B

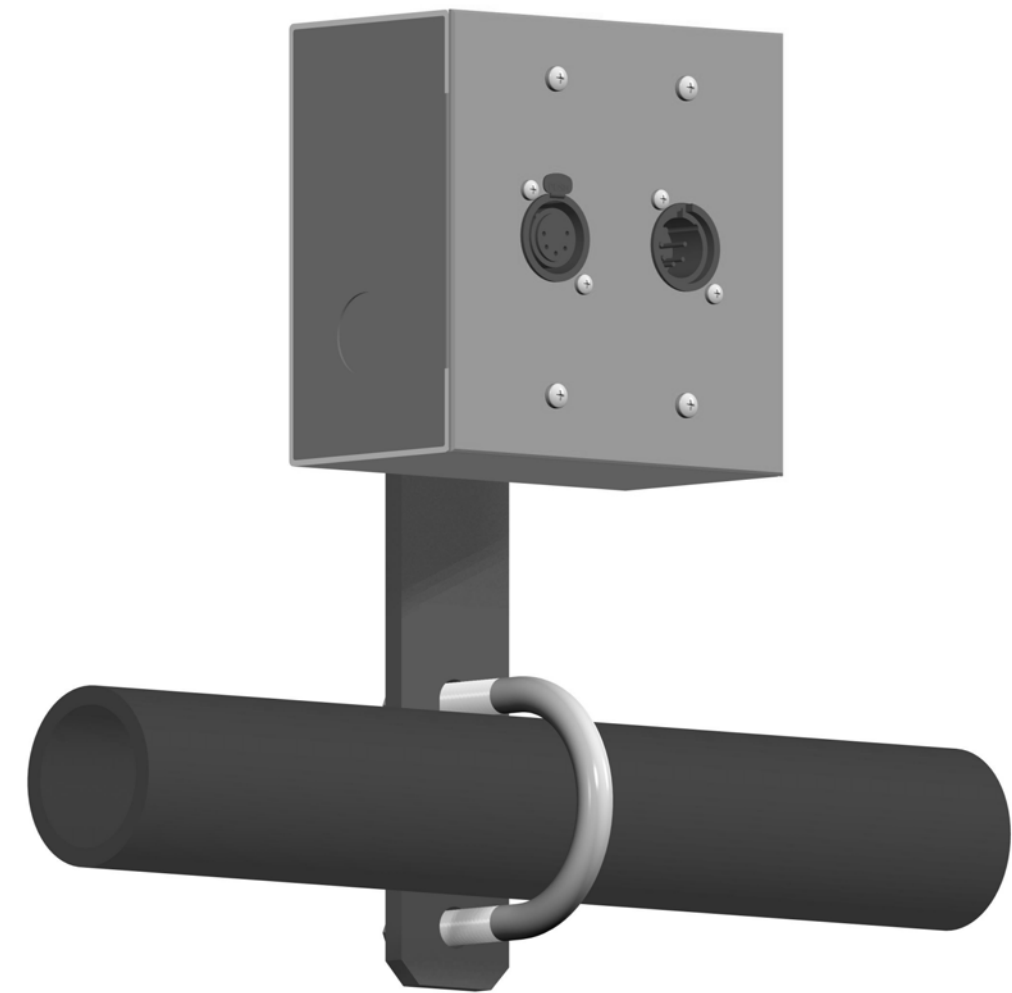
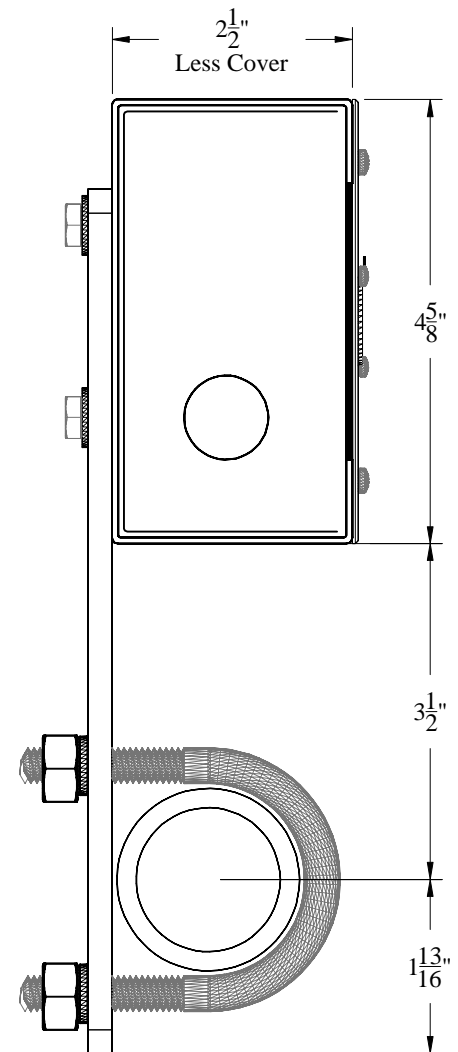
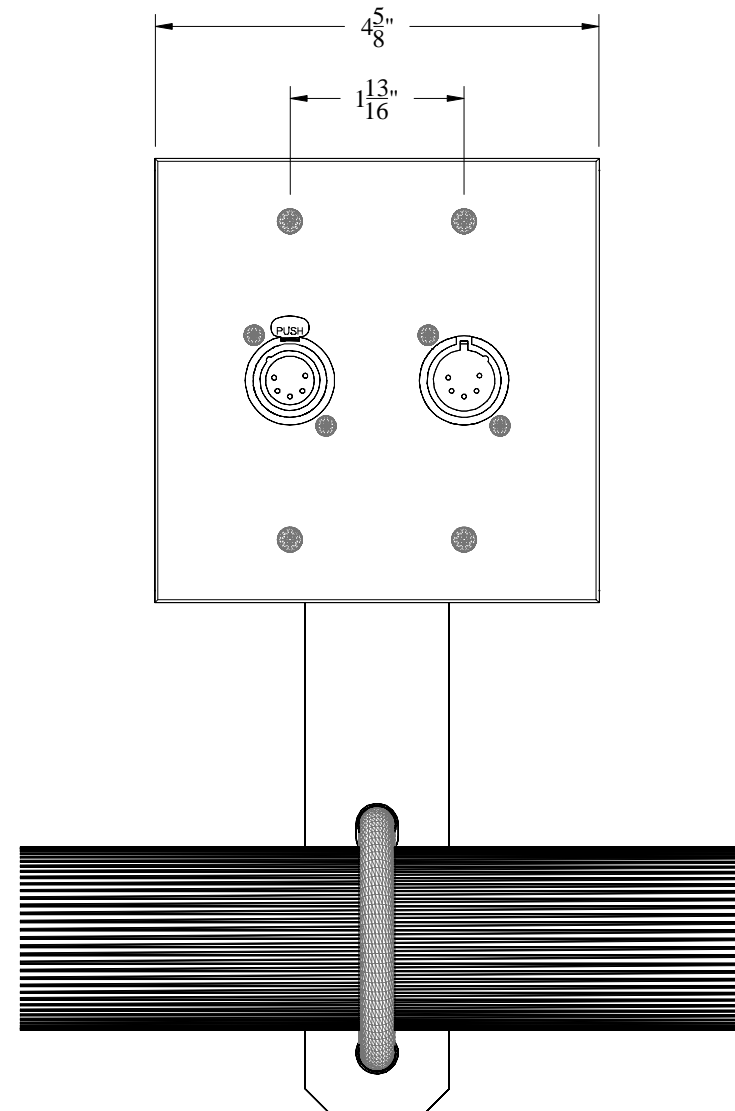
A

D

C

B

A



Provide (2) type BR-3 brackets with each assembly.

CONTRACT NO: PB404		Rigging Innovators, Inc. San Antonio, Texas	
CATALOG:			
DRAWN BY: CADD	11/29/2007	TITLE: Data Box Pipe Mounted Data Box XLR-5 (1) Female & (1) Male Receptacles	
CHECKED BY:		SIZE A3	DATE 11/29/2007
DESIGNED BY:		DRAWING NO: PB404-1XLR5F-1XLR5M	REV. -
(C) R.I., Inc. 2007		SCALE: Half	SHEET: 1 OF 1

8

7

6

5

4

3

2

1