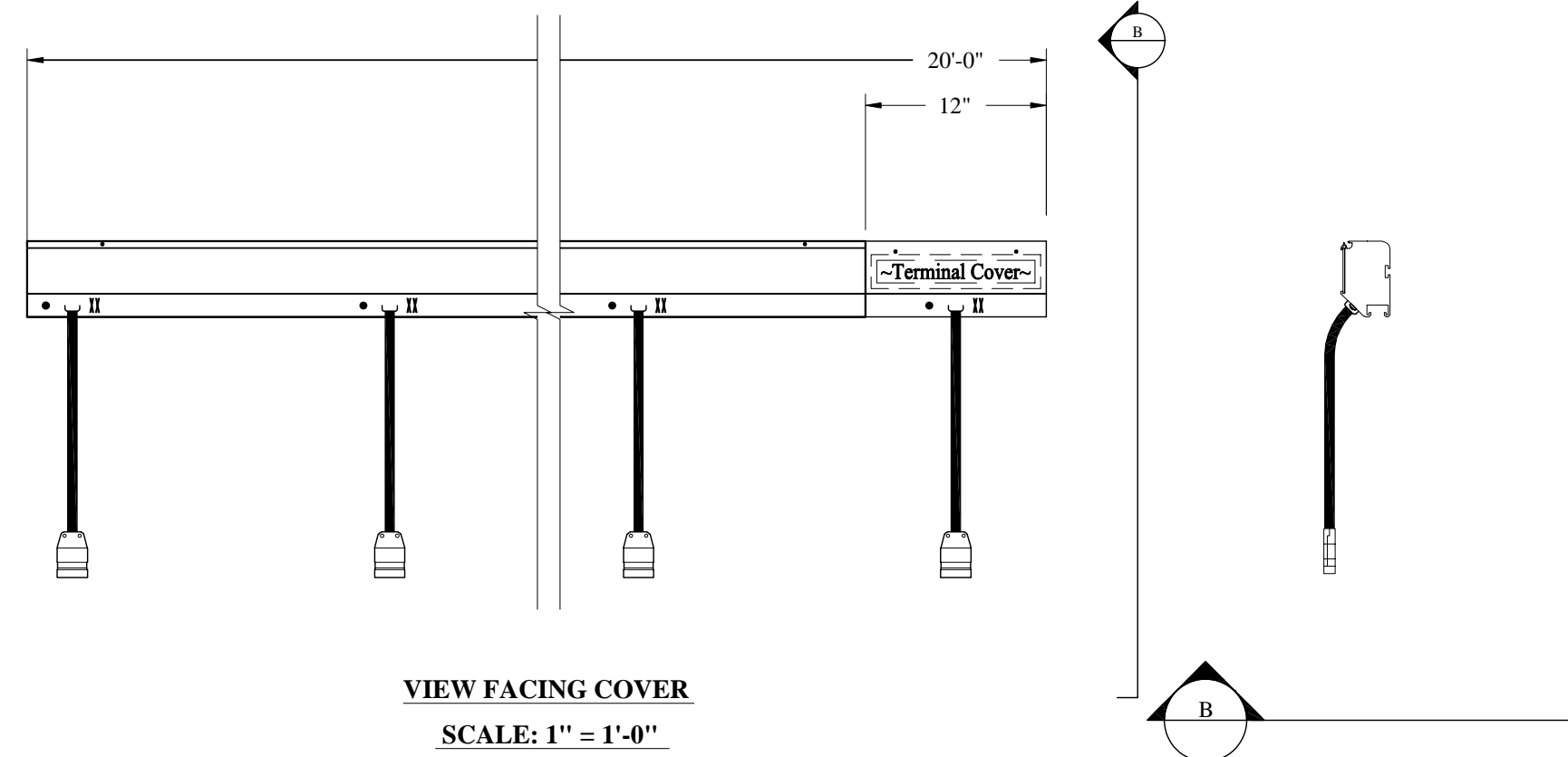
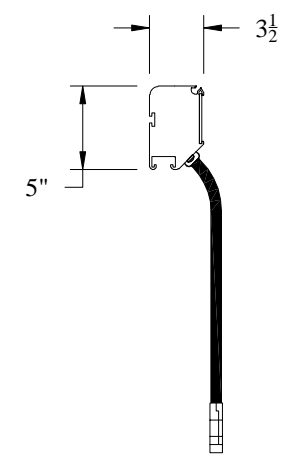


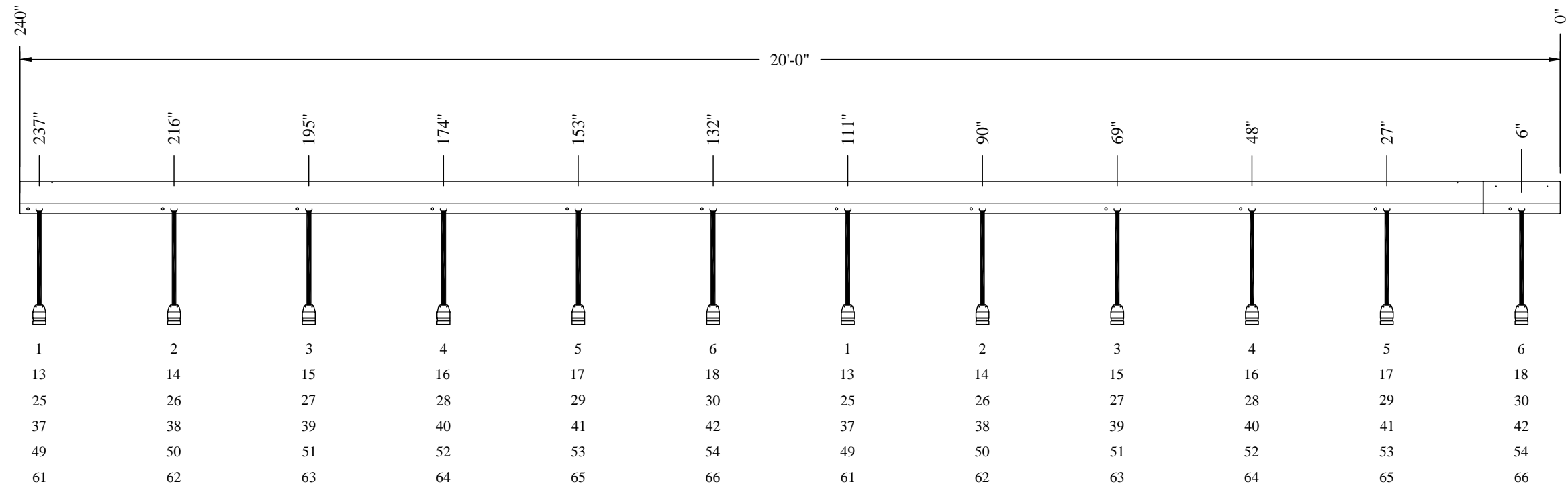
REVISIONS		1
REV.	DESCRIPTION	DATE

**NOTES:**

- 1) Circuit numbers are 2" high white die cut characters at each receptacle on both sides of the connector strip assemblies.
- 2) Finish is semi-gloss black
- 3) Connector strip terminal compartments have 1/2" knockouts on the end for contractor entry.
- 4) Connector strips may be shipped accordin folded in sections not to exceed 12' long. Installer must then splice sections together with the supplied machine screw hardware.
- 5) Pipe battens in drawings may be shown for reference only.
- 6) Connectors may be relocated ±4" to clear splice joints.
- 7) Flush mounted connectors may NOT be located in the terminal compartment cover.
- 8) Bracket assemblies are ordered separately.

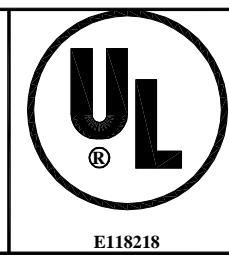


**VIEW FACING COVER**  
SCALE: 1" = 1'-0"



**CIRCUIT LAYOUT (DO NOT SCALE)**

TYPE: 1				QUANTITY: 6				DESCRIPTION: Connector Strip				CATALOG NUMBER: CSE					
MOUNTING BRACKETS				OPTIONS	CONNECTORS						TERMINALS			FEED END FACING COVER			
TYPE	QTY	TYPE	QTY		TYPE	QTY	CKTS	TYPE	QTY	CKTS	TYPE	QTY	CKTS		20 AMP	50 AMP	GROUND
BR-1	5			Neon Indicators	2P&G-18"	12	6	N/A	0	0	N/A	0	0	12 - ZDU4		ZPE4/E	RIGHT



CONTRACT NO: CSE-T		<b>Rigging Innovators, Inc.</b> San Antonio, Texas	
CATALOG: CSE-TB00			
DRAWN BY: CADD	DATE: 02/21/2008	TITLE: Connector Strip - Typical Standard	
CHECKED BY:		DESIGNED BY:	
(C) R.I., Inc. 2007		SIZE: A3	DATE: 02/21/2008
SCALE: AS NOTED		DRAWING NO: CSE-TB00R	REV: -
SHEET: 1 OF 1			